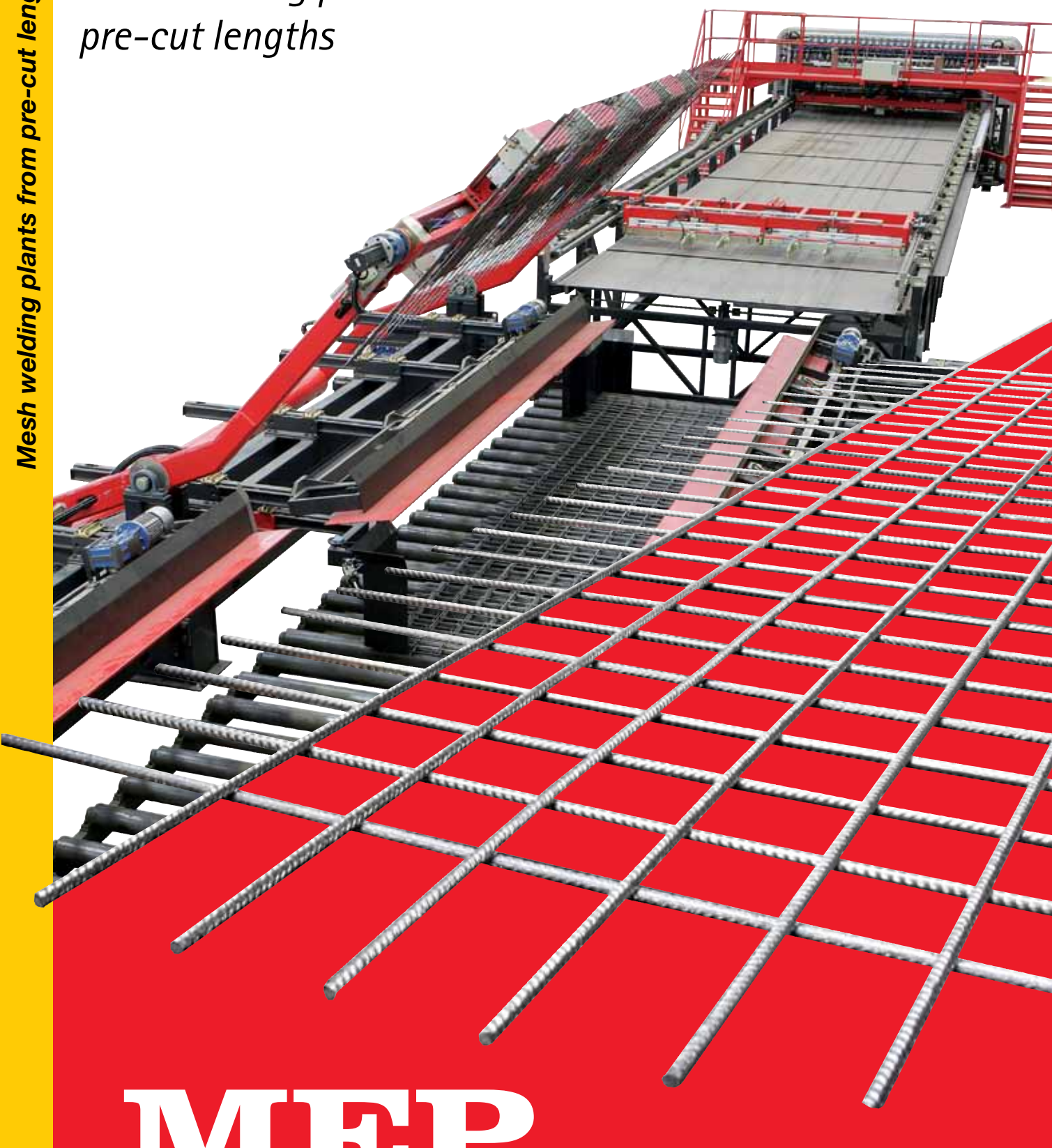




Mesh welding plants from pre-cut lengths

MRSA • MRSA **M-S** • MRSA **SX**

*Mesh welding plants from
pre-cut lengths*



MEP
the history of innovation



www.mepgroup.com



MRSA

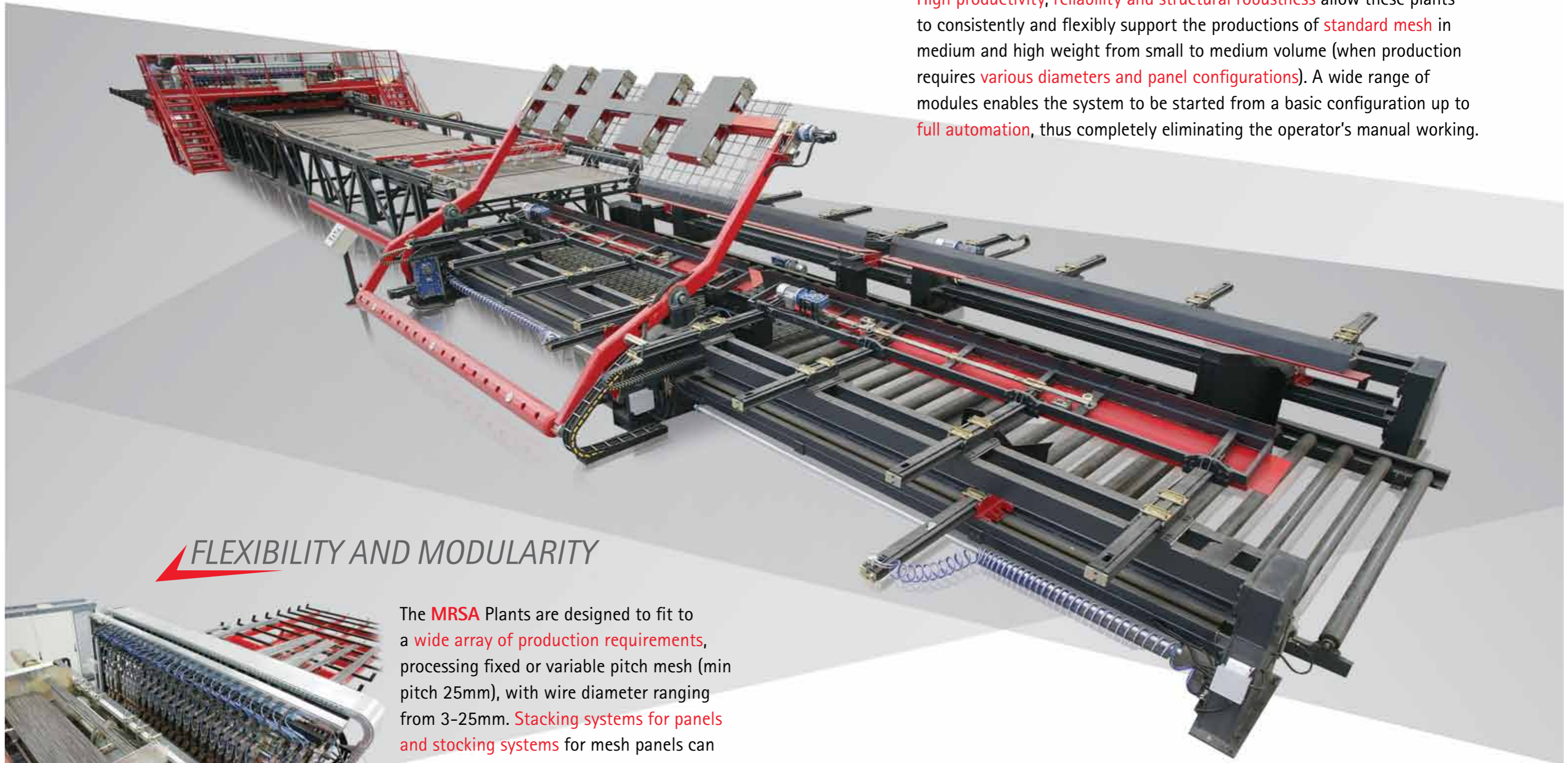
GUARANTEED PRODUCTIVITY FOR EVERY REQUIREMENT

The **MRSA** Series is designed for the production of electro-welded mesh starting from cold-drawn or hot-rolled straight lengths.

High productivity, reliability and structural robustness allow these plants to consistently and flexibly support the productions of **standard mesh** in medium and high weight from small to medium volume (when production requires **various diameters and panel configurations**). A wide range of modules enables the system to be started from a basic configuration up to **full automation**, thus completely eliminating the operator's manual working.

FLEXIBILITY AND MODULARITY

The **MRSA** Plants are designed to fit to a **wide array of production requirements**, processing fixed or variable pitch mesh (min pitch 25mm), with wire diameter ranging from 3-25mm. **Stacking systems for panels and stocking systems** for mesh panels can be **specifically designed** to suit the client and even adapted for **upgrade of an existing plant** at later stage.



Versatility at your service



The **MRSA M** and **MRSA S** versions are welding machines equipped with an automatic loading system of the cross wires and "bridge cylinder" system with manual positioning of the welding units. The plants are capable of producing panels with longitudinal pitches of 50, 100, 150 and 200 mm. In actual fact, the **MRSA S** is well capable of production in large batches, while the **MRSA M** is a simplified version to cope with lower volume demands.



All **MRSA** welding plants adopt single welding press units with integrated transformers designed to be individually positioned at variable pitch distances. **MRSA 50** and **MRSA 100** versions are designed to cope with minimum positioning of 50 mm and 100 mm, either manual or completely automated. Furthermore the **MRSA L** can weld two longitudinal wire coupled one beside the other: the **MRSA F** is designed to weld rebar up to 25 mm in diameter.

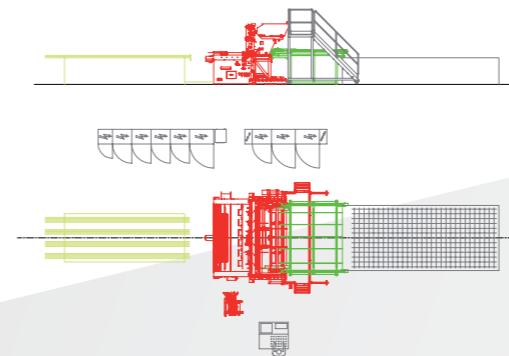
There is no doubt that the **MRSA** Series, through extensive technological research and development, represents the pinnacle in the welding of medium and heavy weight mesh in standard or tailor made sizes.



The **MRSA SX** Plant is based on a fixed welding head equipped with electronic programming system and manual positioning of the welding cylinders. It is designed to produce variable longitudinal pitches starting from 50 mm. The plant is equipped with a fully automated arrangement for the loading of both the long wires and the cross wires, thus allowing a fully automated production cycle.

MRSA M

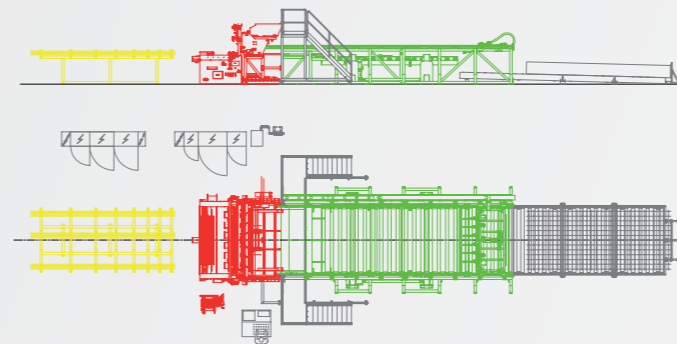
With manual loading of the longitudinal wires, automatic loading of the cross wires, and a longitudinal wire storage compartment/table.



- PRE-CUT BAR STORAGE COMPARTMENT
- PRE-FEEDING MODULE
- WELDING HEAD
- EVACUATION AND LOADING
- TURNING AND STACKING DEVICE

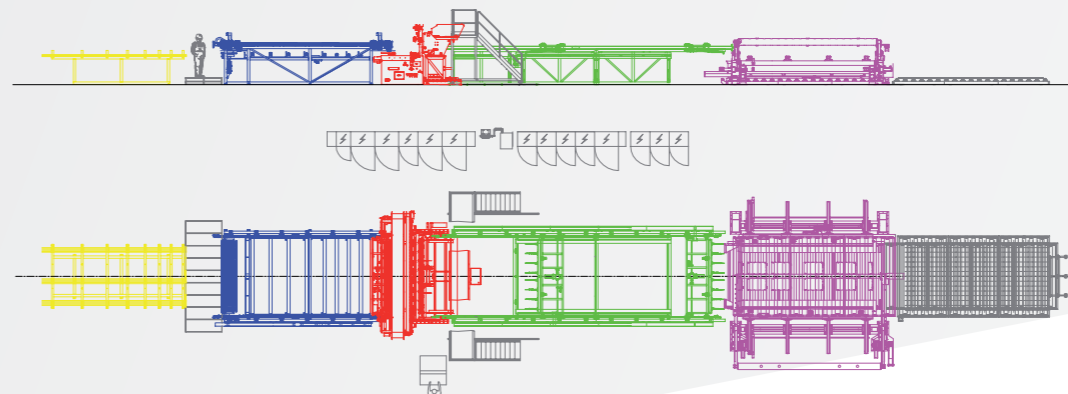
MRSA S

With manual loading of the longitudinal wires, automatic loading of the cross wires, automatic hook plier evacuation system, stockpiling compartment.



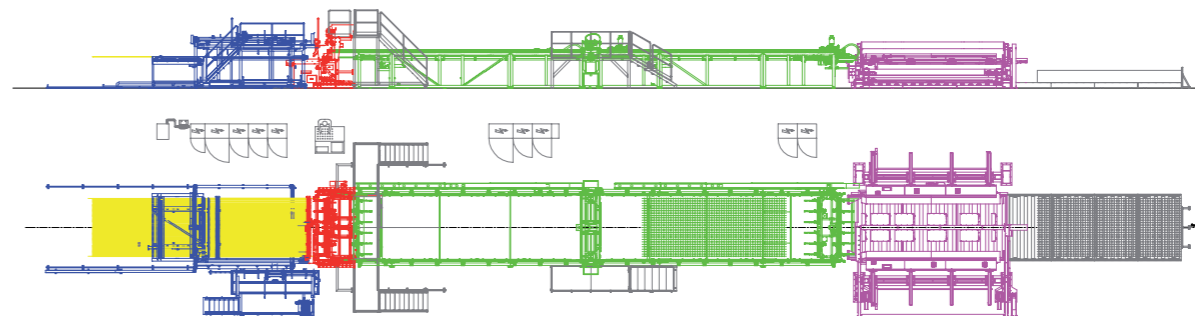
MRSA

Pre-loading module for longitudinal wires complete with automatic gripper conveyor system, automatic loading of the cross wires, automatic double hook plier evacuation system, turning and stacking device, stockpiling compartment.



MRSA SX

Full automated loading system for long wires and cross wires, automatic double hook plier evacuation system, trimmers and/or flash cutters, turning and stacking device and stockpiling compartment.



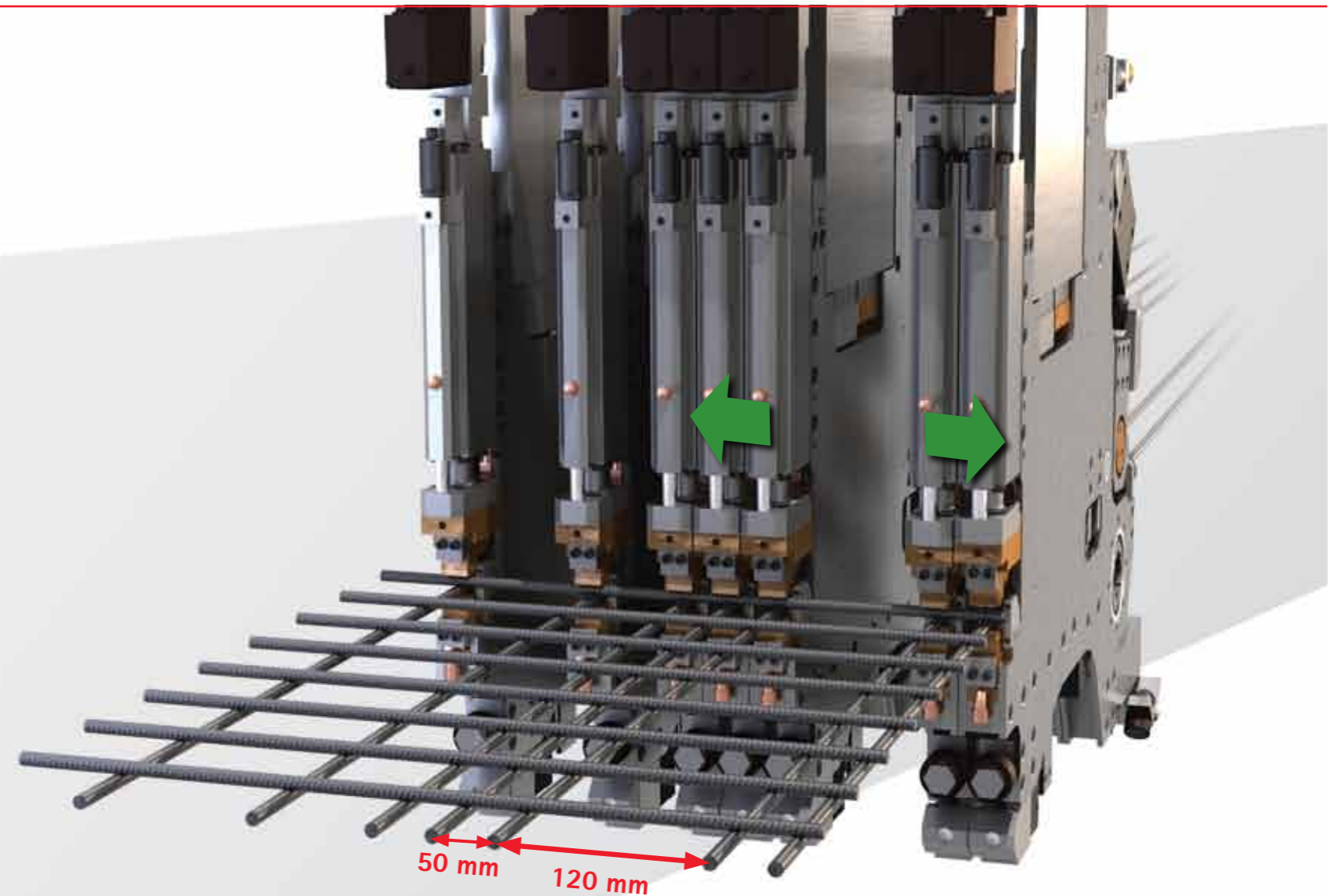
Unique automated devices

As a result of research and development carried out on every single part, and the functionality of, the plant, **high quality mesh is produced**.
An accurate automation system is able to manage the production cycle achieving full efficiency.



Automatic pre-feeding devices are able to count with accuracy and precision the position of each pre-cut bar.

Semi-automatic pre-feeding module for longitudinal wires, equipped with storage table and led system for assistance in manual pre-loading operations.



WELDING UNDER CONTROL

The use of latest **welding technology** (controlled current profiles) **overcomes variations in the mechanical characteristics of the steel material**, whilst **assuring reduced power consumption**.

This **exclusive control** system enables utmost **flexibility in the welding cycle**, according to the customer's specific requirements
More than 100 welding programs are available (i.e. welding points placed at extremities).

Welding of transversal and longitudinal wires up to **25 mm diameter**.



Automatic off-loading and binding systems

TURNING AND STACKING DEVICE



Automatic device for turning and stacking mesh panels. This unit optimizes the stacking of panels, thus increasing the weight per unit of volume. (OPTIONAL)

TYING DEVICE

An automatic device to tie the mesh to eliminate manual intervention. (OPTIONAL)



STOCKPILER

Equipped with a motorized forward feed roller and pneumatic sideboards, the stockpiler enables a gradual overlapping of produced panels. The pack is automatically transferred to a forward feed-roller from which it can be loaded in full safety. (OPTIONAL)



PACKING DEVICE

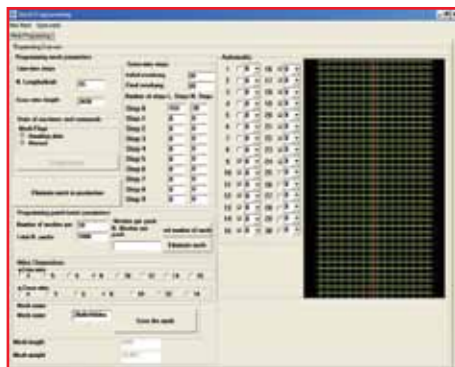
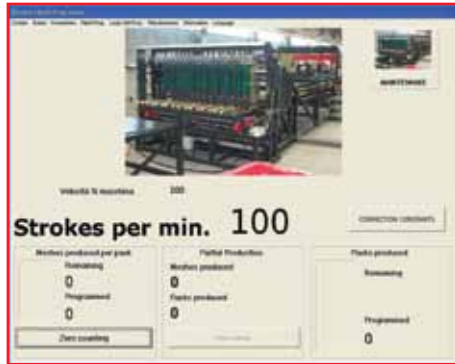
The automatic packing device enables to stockpile, by overlapping them, several packets of tied mesh. (OPTIONAL)



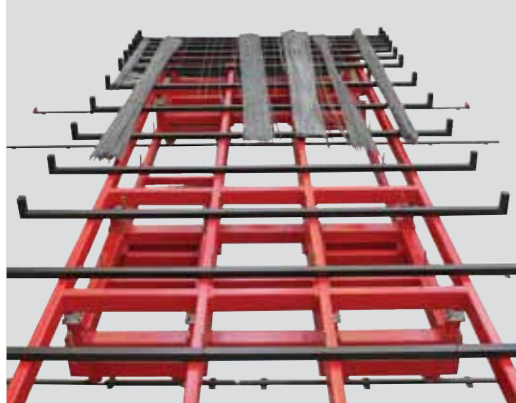
WORLD SYSTEM: TOTAL CONTROL



- **Operator's panel for MEP Industrial P.C., consisting of:**
 - LCD Screen for the visualization of all information in a "user-friendly" graphic mode.
 - Low absorption "Embedded" Compact microcontroller.
 - Input/Output electronic boards, equipped with short-circuit prevention system and axles control system.
- **The software, expressly developed by MEP, enables:**
 - Data input with graphic visualization of programmed and pre-memorized mesh.
 - Memorization of 200 different mesh.
 - Control of all machine parameters with possibility of selecting different welding programs.
 - Memorization and filing of data related to daily working cycles and generation of daily production statistics (welding quantities and metres of produced mesh).
 - "Active Diagnostics" System for a constant efficiency check-up of all elements of the system.
 - Ethernet remote assistance (optional).
 - USB Port for data transfer.
 - Ethernet RJ45 Standard Port (LAN Port) for direct link to the company's net.



LONGITUDINAL BAR STORAGE



- The **bars storage** table allows the stocking of longitudinal bar bundles for production purposes. (OPTIONAL)

CARRIAGE FAST-FORWARD / OFF-LOADING / EJECTION







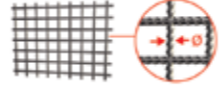
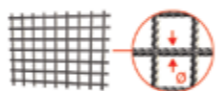
- Produced panels can be fast-forwarded and ejected down to various final collecting stations according to customer's needs. Therefore **the system can be equipped with one or more fast-forward or ejection carriages or a blend of them to optimize working cycles.** (OPTIONAL)

SIDE TRIMMERS



- **Cutting and trimming device for transversal protrusions** (maximum diameter 8 mm) for the **production of trimmed flat panels.** (OPTIONAL)

TECHNICAL AND PRODUCTION CHARACTERISTICS

			
	MRSA - MRSA F	MRSA S - MRSA M	MRSA SX
 DIAMETER OF WORKABLE WIRE (other diameters on request)	from Ø 4 to Ø 16 mm (25 mm optional)	from Ø 4 to Ø 12 mm	from Ø 3 to Ø 8 mm
	From 0.159" to 0.628" (1" optional)	From 0.159" to 0.472"	From 0.120" to 0.315"
fy = 600 N/mm ² - ft = 700 N/mm ² (other characteristics on request)			
MESH PRODUCTION			
 Mesh width (other sizes on request)	1200 ÷ 3800 mm	1200 ÷ 3200 mm	1200 ÷ 2500 mm
	48" ÷ 150"	48" ÷ 126"	48" ÷ 98"
Mesh length (other sizes on request)	1200 mm ÷ 6000 mm	1200 mm ÷ 6000 mm	1200 mm ÷ 6000 mm
	48" ÷ 240"	48" ÷ 240"	48" ÷ 240"
max number of welding points *	120 max/stroke		
LONGITUDINAL WIRES (LW)			
Number of longitudinal wires	according to the pitch and the mesh width to be produced		
 LP mesh pitch (other sizes on request)	programmable from 50 ÷ 75 ÷ 100 mm	programmable from 50 mm	programmable from 25 mm
	programmable from 2" ÷ 3" ÷ 4"	programmable from 2"	programmable from 1"
overhangs	> 25 mm	> 25 mm	> 5 mm
	> 1"	> 1"	> 0.2"
CROSS WIRES (CW)			
number of cross wires	according to the pitch and the mesh length to be produced		
 CP mesh pitch	From 50 mm	From 50 mm	From 25 mm
	From 2"	From 2"	From 1"

THE SYSTEM REQUIRES AN AIR-COMPRESSOR AND A WATER-COOLING SYSTEM.

fy: max. unit yield point - ft: max. breaking point

* the number of strokes can vary according to the wire diameter and the longitudinal wire fast-forward.

MEP

MEP Macchine Elettroniche Piegatrici
via Leonardo Da Vinci, 20
I - 33010 Reana del Roiale (UD) - ITALY
Tel. +39 0432 851455
Fax +39 0432 880140

MEP
BRASIL

MEP Brasil
Rua Bom Jesus da Cachoeira, nº 100
Parque Edu Chaves
CEP 02236-020 - Sao Paulo - BRASIL
Tel. +55 11 2240.4610 - 2240.4553
Fax +55 11 2240.4610 - 2240.4553

MEP
FRANCE

MEP France S.A.
8 bis, rue des Oziers
BP 40796 Zone d'Activités du Vert Galant
95004 St. Ouen L'Aumône FRANCE
Tel. +33 1 34300676
Fax +33 1 34300672

MEP
NORD-EUROPE

MEP Nord-Europe GmbH
Brienner Strasse 55
D-80333 München GERMANY
Tel. +49 089 41610829

MEP
POLSKA

MEP Polska Sp. z o.o.
ul. Józefowska 13/A
93-338 Łódź POLAND
Tel. +48 42 645 7225
Fax +48 42 645 7058

MEP
VOSTOK

MEP Vostok OOO
Ул.Новаторов, 36 корп.3 Офис XXIV
119421 Москва Россия
Tel./Fax: +7 495 745 04 90

MEP
ASIA

MEP Asia Co., Ltd.
1303 Ho, 301-Dong, Bucheon Techno Park
345 Sukcheon Ro, Ojung-Gu
Bucheon, Gyunggi-Do - SOUTH KOREA
Tel. +82 32 329 1956
Fax +82 32 329 1957

www.mepgroup.com

sales@mepgroup.com